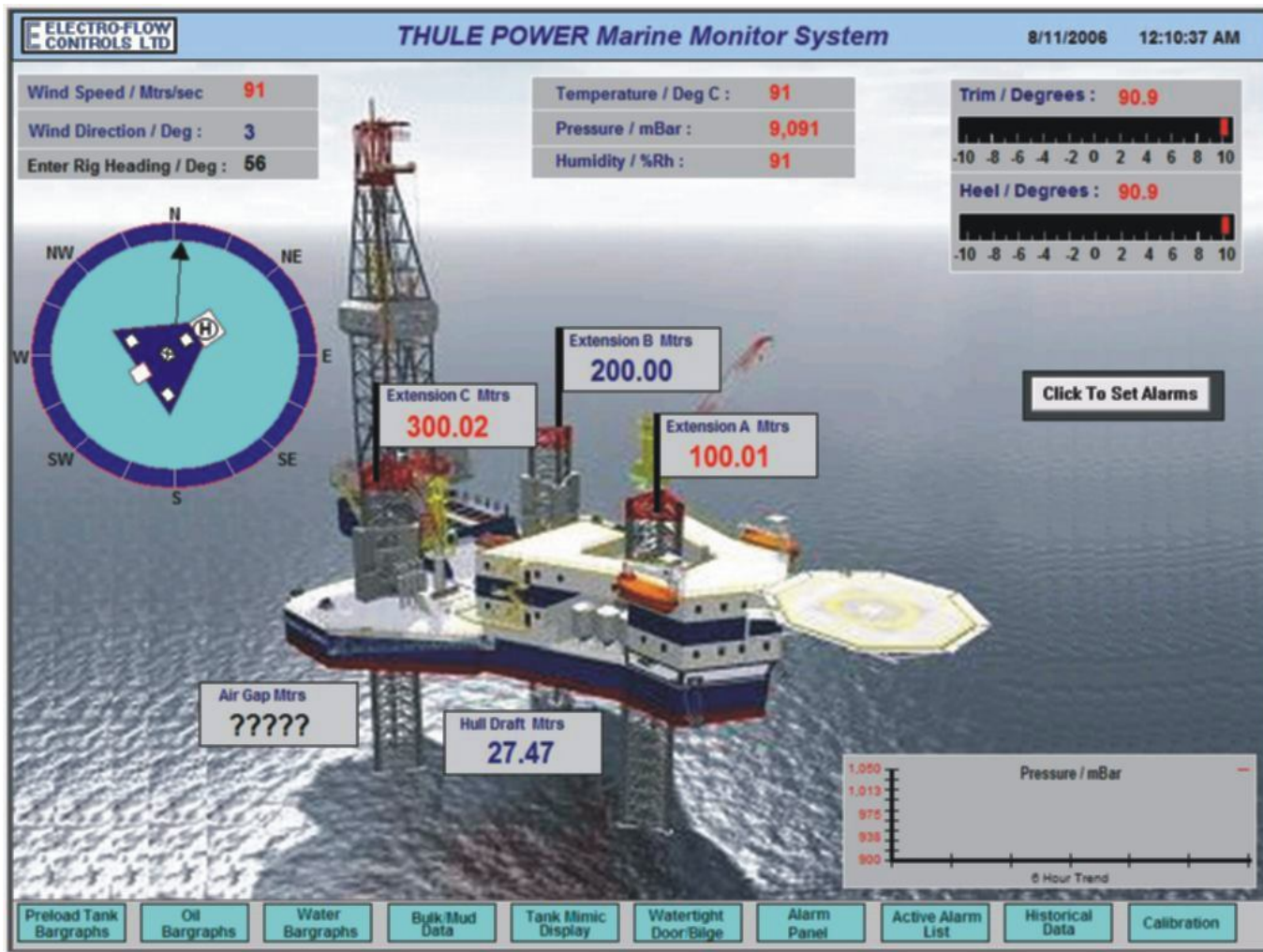


LEG LENGTH DEPLOYMENT



EFC GROUP

ANCHOR MONITORING BALLAST MONITORING PRE-LOAD TANK MONITORING RACK PHASE DIFFERENCE ENVIRONMENT MONITORING



LEG LENGTH DEPLOYMENT

- **FLEXIBLE DESIGN**
Sensor assemblies interface with most kinds of Jacking Systems
- **QUICK & ACCURATE INFORMATION**
Real-time Leg Length Deployment enhanced by Deck Level Data
- **SAFE OR HAZARDOUS AREA COMPLIANT**
- **CAN BE INCORPORATED INTO EFC'S INTEGRATED MARINE MONITORING SYSTEM (IMMS)**



DESIGNED & CONSTRUCTED
TO OPERATE IN ZONE 1 & SAFE AREAS



LEG LENGTH DEPLOYMENT



EFC GROUP

ANCHOR MONITORING BALLAST MONITORING PRE-LOAD TANK MONITORING RACK PHASE DIFFERENCE ENVIRONMENT MONITORING

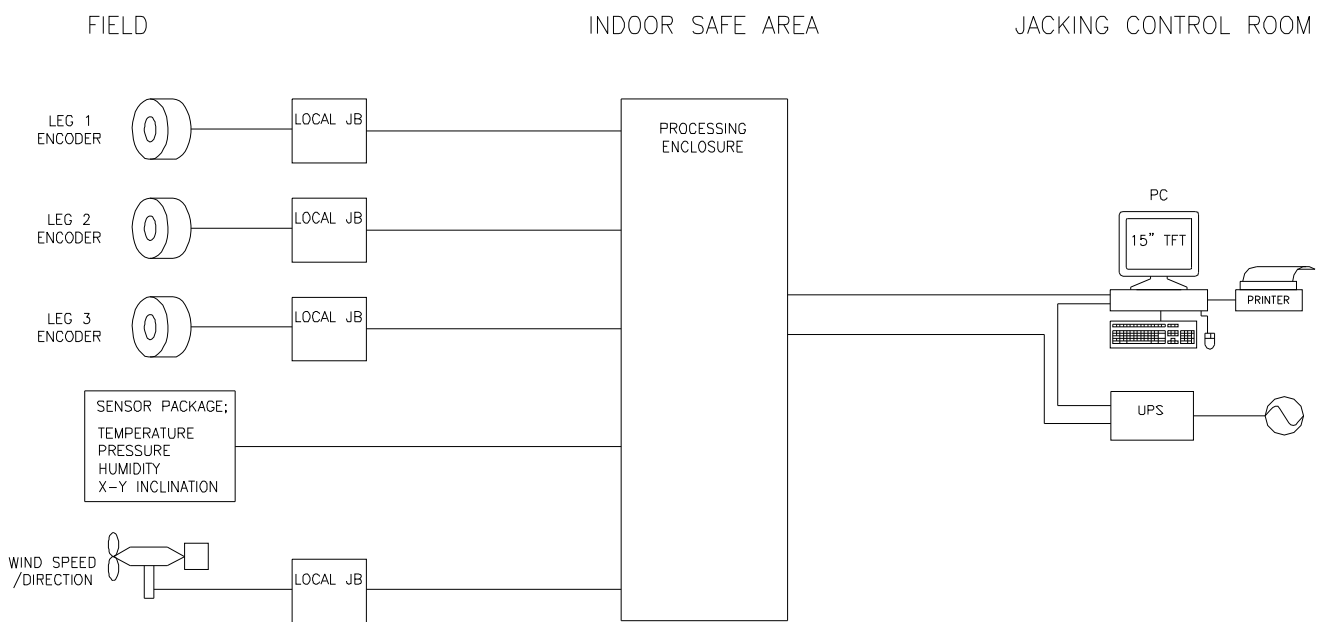
The Leg Length Deployment Monitoring System provides data on the leg length deployed below deck level in either feet or metres. A Deck Inclinometer further enhances data by providing accurate deck level information.

A typical screen display is shown with a Rig Mimic illustrating:

- Individual leg lengths deployed
- Relative deployment of each leg
- Jacking motor positions and rotations
- Deck angle

Leg Length Monitoring can be supplied as part of an Integrated Marine Monitoring System, which includes:

- Meteorological Sensors
- Rack Phase Difference
- Hull Draft
- Watertight Door Status
- Tank Gauging
- Air Gap
- Deck Angle



Illustrates Leg Length Deployment within Integrated Marine Monitoring System

Block 1, Units 3-7
Souterhead Road
Altens
Aberdeen AB12 3LF Scotland UK
T: +44 (0) 1224 249355
F: +44 (0) 1224 249339
E: info@efcgroup.net

1424 West Sam Houston Parkway North
Suite 140
Houston
Texas 77043 USA
T: +1 713 468 5325
F: +1 713 468 3498
E: info@efcgroup.net

65 Victoria Road
Guiseley
Leeds
LS20 8DQ
England UK
T: +44(0)1943 870 822
E: info@efcgroup.net

11c Tuas Road
Singapore
638509
T: +65 6794 5261
E: info@efcgroup.net

