

BOP ELECTRIC CONTROL SYSTEM



EFC GROUP

CONTROL PANEL REPLACEMENT ELECTRIC CONTROLS UPGRADE SURFACE BOP SEMI-SUB SHALLOW PILOTED HYDRAULIC



Typical Zone 1 BOP Remote Control Panel



DESIGNED & CONSTRUCTED
TO OPERATE IN ZONE 1 & SAFE AREAS



BOP ELECTRIC CONTROL SYSTEM



EFC GROUP

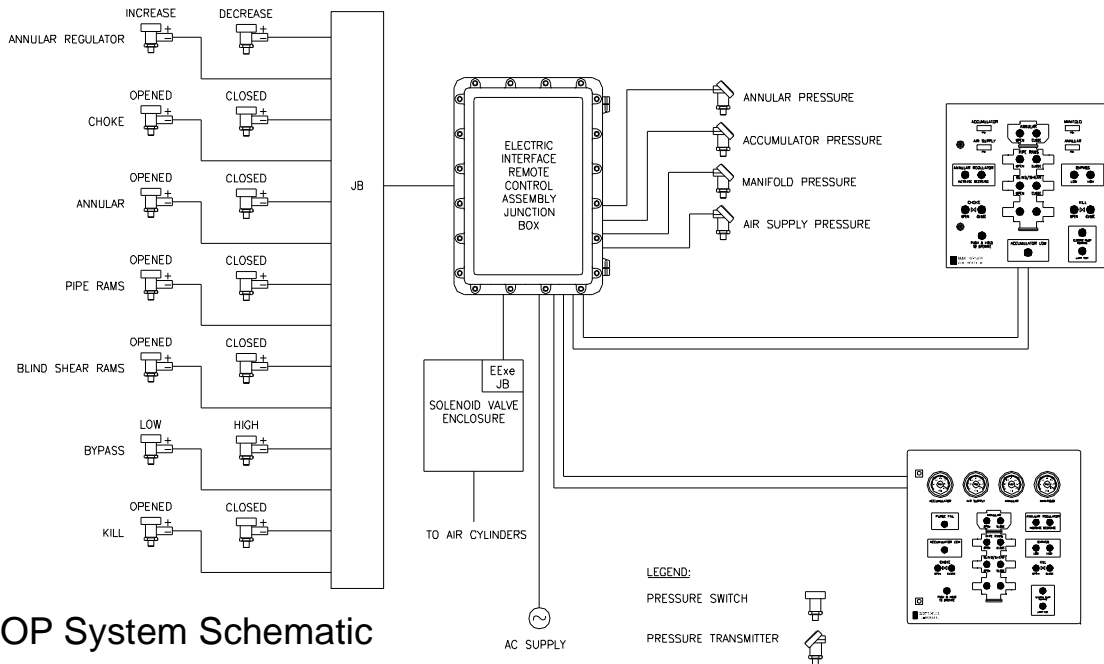
CONTROL PANEL REPLACEMENT ELECTRIC CONTROLS UPGRADE SURFACE BOP SEMI-SUB SHALLOW PILOTED HYDRAULIC

Replaces existing BOP Remote Control Panels:

- All Electric Panel
- Suitable for Zone 1 operation
- EExi 'a' 6" analogue gauges
- EExd components: lamps & pushbuttons
- 316L Stainless Steel Construction
- Sensors supplied
- Configurable for any BOP Ram, Annular and Diverter Arrangement
- 'Press & Hold' to operate
- Engraved BOP mimic



Typical Safe Area BOP Remote Control Panel



Typical BOP System Schematic

Block 1, Units 3-7
Souterhead Road
Altens
Aberdeen AB12 3LF Scotland UK
T: +44 (0) 1224 249355
F: +44 (0) 1224 249339
E: info@efcgroup.net

1424 West Sam Houston Parkway North
Suite 140
Houston
Texas 77043 USA
T: +1 713 468 5325
F: +1 713 468 3498
E: info@efcgroup.net

65 Victoria Road
Guiseley
Leeds
LS20 8DQ
England UK
T: +44(0)1943 870 822
E: info@efcgroup.net

11c Tuas Road
Singapore
638509
T: +65 6794 5261
E: info@efcgroup.net

