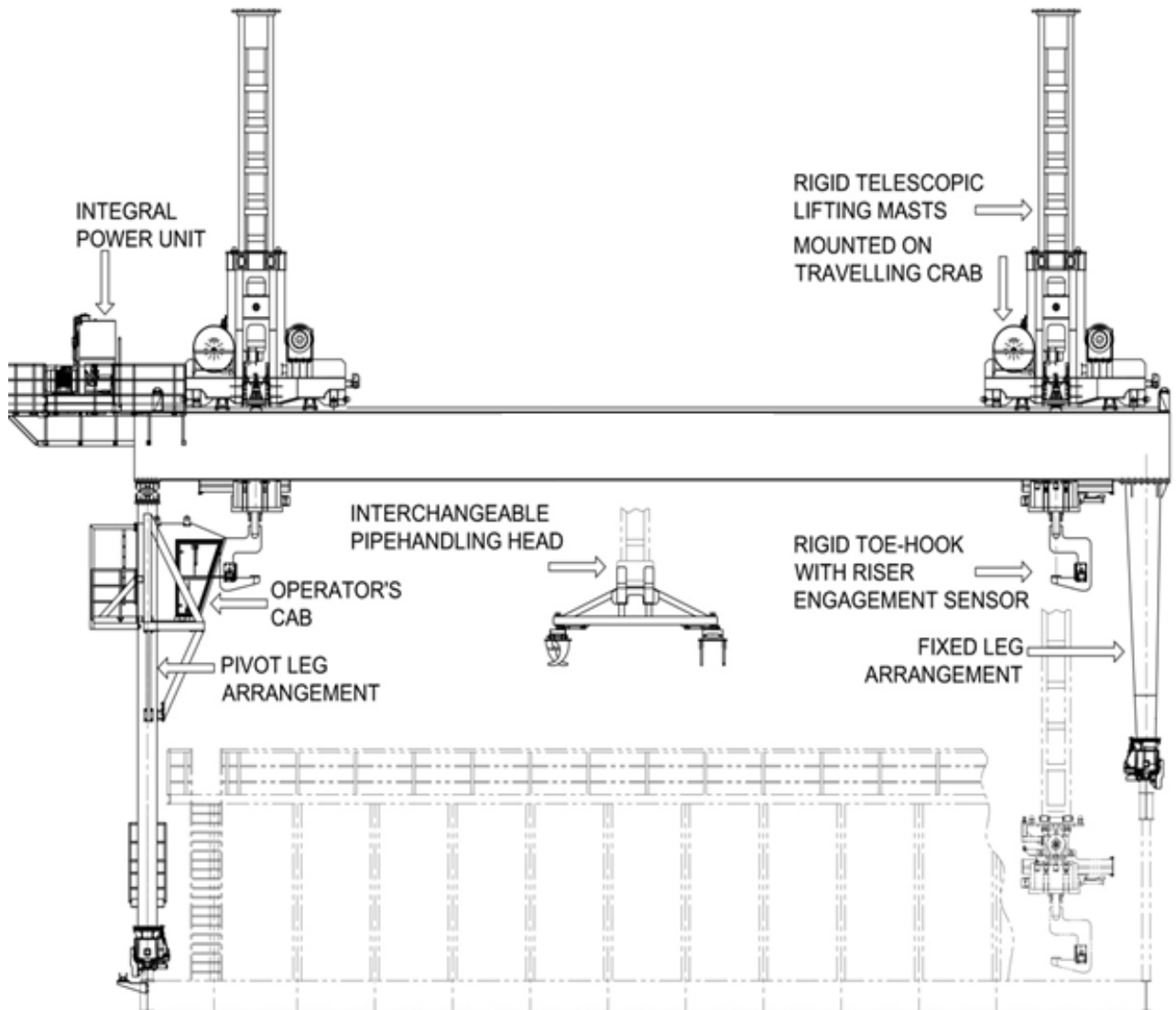


RISER HANDLING



RISER CAN BE AWKWARD AND DELICATE TO HANDLE. SAFE AND EFFICIENT RISER HANDLING PRACTICES REQUIRE CORRECTLY DESIGNED EQUIPMENT FOR THE TYPES OF RISER JOINT BEING RUN.

Optional pipe handling capability – one crane handles all horizontal tubulars.

Once the riser has been lifted it must be presented safely to the riser lift tool at well centre. This is achieved with a riser skate or multi-function catwalk machine.

RISER HANDLING

The riser is landed on the skate, supported at each end at the riser flanges. The skate is driven to well centre and the riser latched to the lift tool. If the lift tool is inclined or at a different elevation then a riser lift may be fitted to the skate. Once attached the riser is lifted clear by the travelling block. The rear support freewheels along the skate or catwalk with the riser bucket pivoting to follow changing angle of the riser. Once approaching well centre, the lower end of the riser may be tailed out of the bucket using a dedicated tailing arm or drill floor manipulator arm fitted with a riser tailing head.



DESCRIPTION	SPECIFICATION
Weight Capacity	Up to 50 Te
Joint Capacity	10' pup up to 90' riser & telescopic joints
Documentation Included	User Manual, Manufacturing Databook
Certification	API, Norsok etc. as per applicable

RISER HANDLING BENEFITS

- Combined Catwalk Features for Pipe & Riser
- Riser Lift/Tilt functions
- Freewheeling Pivoting Riser Bucket
- Integrated or Remote Tail-in Arms
- Riser Heads for Manipulator Arms



Riser Tailing Transporting Horizontal Riser to Well Centre

