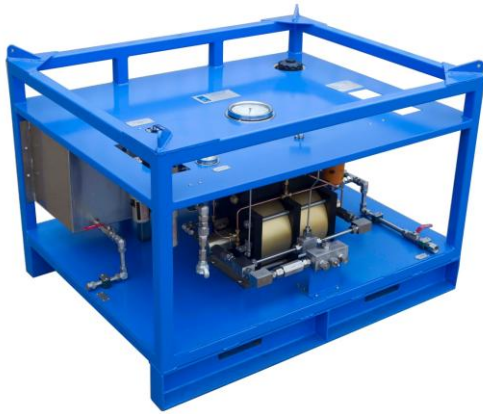


GLYCOL INJECTION UNIT



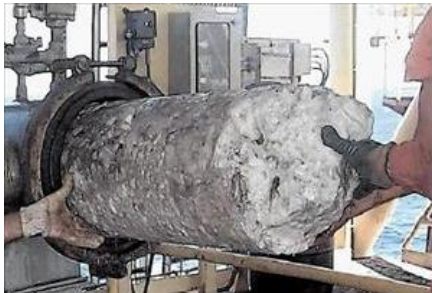
Typical 150L Reservoir GIU



Typical 1000L Reservoir GIU

THE EFC GROUP GLYCOL INJECTION UNIT PROVIDES A METHOD TO PREVENT HYDRATES FORMING WITHIN THE CHOKE & KILL DRILLING MANIFOLD DOWN STREAM OF THE CHOKES.

The GIU is designed for use in Zone 1 hazardous areas



Hydrate formation

GLYCOL INJECTION UNIT INCLUDES:

- Air Regulator and Lubricator
- Tank Drain
- Level Gauge
- HP 9/16" Ports
- Glycol External Inlet

GLYCOL INJECTION UNIT

System Description

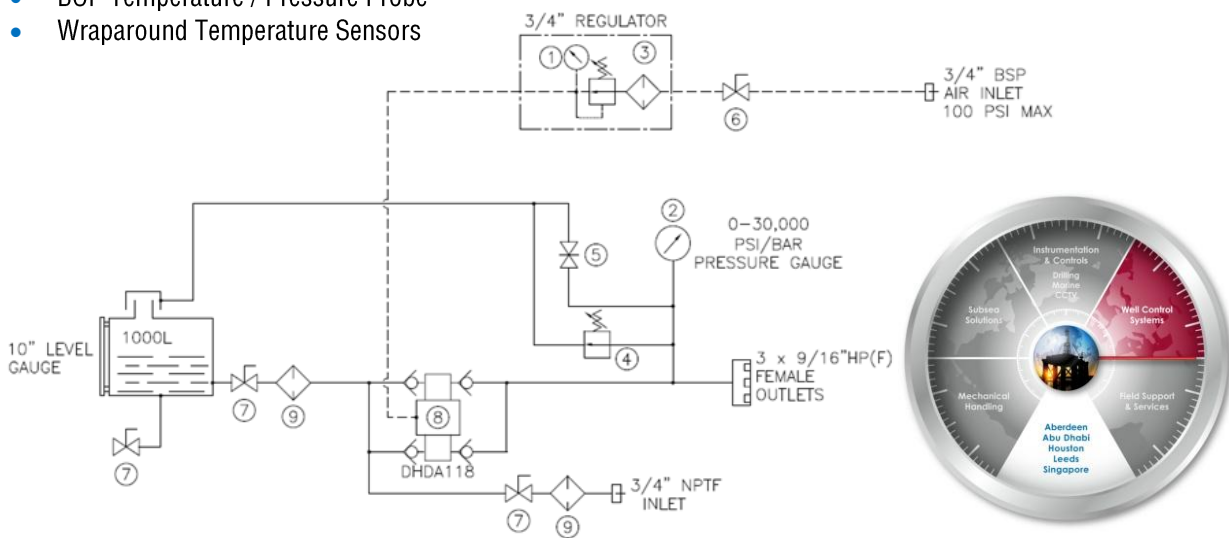
Hydrates forming can cause the manifold flowlines to be blocked, allowing pressure to build in an uncontrolled manner. The Glycol Injection unit works by pumping glycol into the manifold with a pressure in excess of the pressure in the manifold. Our Glycol Units have dual pumps to ensure that enough anti-freeze is delivered. Our pumps are rated to 23,000Psi and are capable of delivering 1ltr per minute at 15,000Psi

GLYCOL INJECTION UNIT	SPECIFICATION
Overall Size	1140mmL X 1550mmW X 935mmH
Overall Weight	460Kg
Zone Rating	Suitable for Zone 1
Maximum Working Pressure	23,600Psi
Maximum Working Temperature	-20°C to 60°C
IP Rating	IP68
Documentation Included	Manufactures Data Book (MDB), User Manual (UM) Technical & Certification Manual (T&CM)
Certification	ATEX Compliant, Norsok, IECEx & DNV
<i>NB: Technical data may be subject to change</i>	

FEATURES	BENEFITS
Optimal Flow Rates	6.2LPM at 5,000psi 1.9LPM at 21,000psi
Robust Design	Suitable for rig floor operations within salt laden atmosphere
Tank Sizing	150L, 1,000L or external tank design. Up to 2,500L tank has been provided and integrates with third party source of Glycol
Lifting Points	Forklift pocked and padeyes provided for safe onboard lifting procedures
Gauge & Tank Gill Location	Maintenance friendly

EXPANDABILITY

- Liquid Seal Monitor (LSM)
- Finescale Gauge Set (FSG)
- BOP Temperature / Pressure Probe
- Wraparound Temperature Sensors



HPHT/0114/003/A