

DRILL FLOOR MANIPULATOR ARM



THE DRILL FLOOR MANIPULATOR ARM (DFMA) IS A HANDLING DEVICE USED FOR GUIDING/TAILING VERTICAL TUBULARS ON AND AROUND THE DRILL FLOOR.

It can be used for a variety of operations between the V-Door, Well Centre, Mousehole and the set back area.

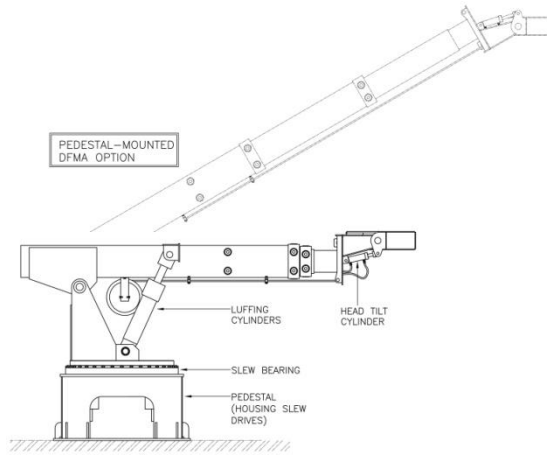
Functions include:

- Boom luff up / down
- Boom extend / retract
- Head tilt up / down
- Slew clockwise / anti-clockwise
- Claws close / open



DRILL FLOOR MANIPULATOR ARM

Using a DFMA reduces the need for manual handling presence on the drill floor, and enhances the safety of operations involving vertical tubular handling.



DESCRIPTION	SPECIFICATION
Design	Pedestal & Underslung version
Slewing Range	360° Continuous [Slew Limits available upon request]
Maximum Slewing Torque	82 kNm
Maximum Overturning Moment	200kNm
Telescopic Boom Stroke	4500mm
Telescopic Push/Pull Force	50kN
Hydraulic Cylinders	17/4PH condition H1150 Stainless Steel Rods, 50µm chrome plating. Counterbalance valves fitted to ensure stability/safety between operations / loss of power.
Functions:	<ul style="list-style-type: none"> • Boom luff up / down • Boom extend / retract • Head tilt up / down • Slew clockwise / anti-clockwise • Claws close / open
Drill-pipe Head Tubular Size	Up to ø9½"
Intermediate Head Tubular Size	Up to ø21"
Riser Head Tubular Size	Up to ø51"
Documentation Included	Manufactured Data Book & User Manual
Certification	API, ATEX, IECEx as required

NB: Technical data may be subject to change

FEATURES	BENEFITS
Drillpipe Handling	Safe maneuvering around drill floor
Tailing	Casing and riser between catwalk and well-centre
Rig Type	Supplied or retro-fitted onto any design of rig, either standard design or customised to suit
Tubular Outheads to suit up to ø54" or greater	Fast change capability
3rd Party Controls Integration	Drilling Controls, Anti-Collision



MH/0914/005/A