

# CONDUCTOR TENSIONING UNITS (CTU)

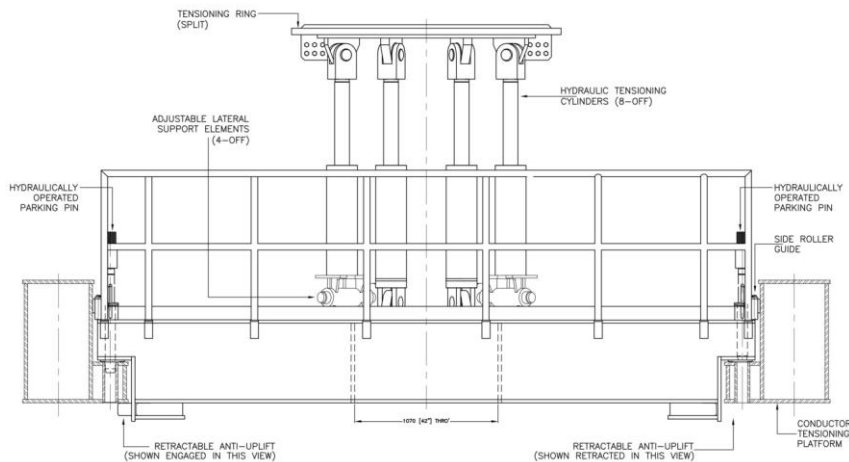


**A CONDUCTOR TENSIONING SYSTEM MAINTAINS A PRIMARY, VERTICAL TENSION AND THEREFORE A LATERAL STABILITY TO THE CONDUCTOR STRING. THIS ENABLES IT TO WITHSTAND THE LOADS IMPOSED UPON IT BY ENVIRONMENTAL CONDITIONS AND OFFSHORE DRILLING OPERATIONS.**

A Conductor Tensioning System consists of an elevated tensioning ring pinned to and supported by hydraulic tensioning cylinders, each of which are interconnected to a compensated hydraulic circuit employing bladder type accumulators.

# CONDUCTOR TENSIONING UNITS

When the cylinders are hydraulically extended to their mid-stroke, the tensioning ring exerts a balanced upward pressure against a collar fitted around the conductor, thereby imposing vertical tension on the conductor string. Load-induced variations in hydraulic pressure in any of the tensioning cylinder circuits are compensated for by the accumulators, which maintain and balance hydraulic pressure during variations in tension. This causes stroking out or retracting of the hydraulic cylinders over their allowable compensation stroke, thus maintaining tension in the Conductor String.



DESCRIPTION	SPECIFICATION
<b>COMPACT CTU:</b>	
Tensioning Capacity	230,000 kgs
Max Conductor Diameter	36" (Adaptors available for smaller conductor diameters)
Hydraulic Cylinders	4-Off
Cylinder Stroke	305 mm
Accumulators	3-Off bladder (Nitrogen filled) type
<b>LARGE SKID-MOUNTED SPLIT CTU:</b>	
Tensioning Capacity	400,000 kgs
Max Conductor Diameter	36" (Adaptors available for smaller conductor diameters)
Hydraulic Cylinders	8-Off (4-Off per half)
Cylinder Stroke	610mm
Accumulators	Up to 11-Off bladder type Nitrogen filled (depending on application)
Mode of Travel	Slot and claw type skidding mechanism for travel across CTP structure
<i>NB: Technical data may be subject to change</i>	

FEAUTES	BENEFITS
Rig Type	Can be retro-fitted or new supply to any rig design
Tensions	Up to 400,000 kgs
Loads	Side loads up to 80,000 kgs
Bespoke	Options available to suit any rig layout or restriction
Zone 1	Classified for Zone 1 installation
Setting & Charging	Provided with integral hydraulic power unit and control console for setting cylinders and charging accumulators
Angular Deflection	Reduces bending loads imposed on the conductor string