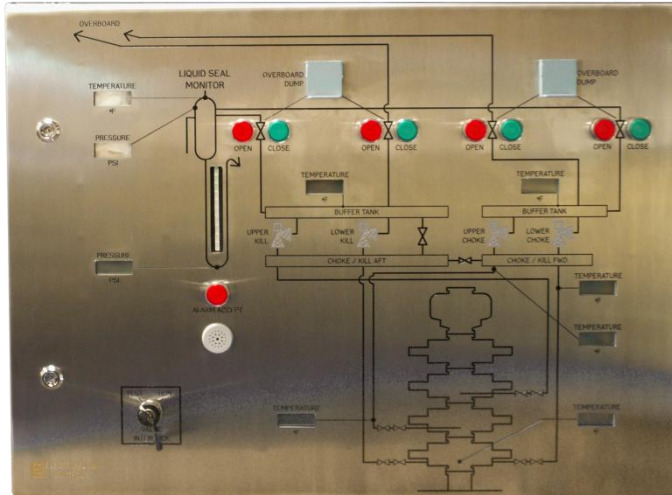


BOP TEMPERATURE or PRESSURE PROBE



EFC BOP TEMPERATURE / PRESSURE PROBE IS DESIGNED TO REPLACE THE BLIND FLANGE IN A 15,000PSI BOP RAM. AN EFC PROBE IS SUITABLE FOR BOTH SURFACE AND SUBSEA APPLICATIONS.

Measurement of pressure across the BOP is critical to essential well control. Display can be a diverse range of analogue and digital display, integrated with informative process mimics, engravings or touchscreens.

EFC can provide either individual sensors for integration with 3rd party systems or a complete monitoring solution.

The BOP probes can monitor either Temperature or Pressure, or both, inside the stack during operations. The probe is sized for the instrumented tip to remain just outside the wellbore: in this position the sensors sits in a position equivalent to that of a retracted ram.

Subsea probes can be hardwired to surface through cable and winch arrangement. Alternatively a subsea ROV readable display can be installed with battery lasting up to six months.

Multiple remote monitoring stations can be installed for users to view information as soon as it is available allowing appropriate steps/actions to be taken.

BOP TEMPERATURE / PRESSURE PROBE

BOP TEMPERATURE PRESSURE PROBE	TECHNICAL SPECIFICATION
Overall Size	To fit client BOP required length and flange type
Zone Rating	Zone 1 or Safe Area, Subsea
Maximum Working Pressure	15,000psi
IP Rating	IP 68
Documentation Included	Manufactures Data Book (MDB), User Manual (UM) Technical & Certification Manual (T&CM)
Certification	ATEX, API 6A, DNV Approval
Warranty	2 years extended to 5 years

NB: Technical data may be subject to change

FEATURES	BENEFITS
Size	The probe is sized so that the instrumented tip remains just outside the wellbore: in this position the sensors sit in a position equivalent to that of a retracted ram
Protection	A heavy duty housing fully protects the electrical connections
HPHT Package	The probe provides temperature, which can be displayed and recorded as part of a HPHT monitoring package
Track record	EFC's BOP probes have an operational track record over a 15 year period and have been successfully deployed on a number of North Sea HPHT wells

EXPANDABILITY

- HPHT Monitoring System
- BOP Control System



BC/0114/004/A