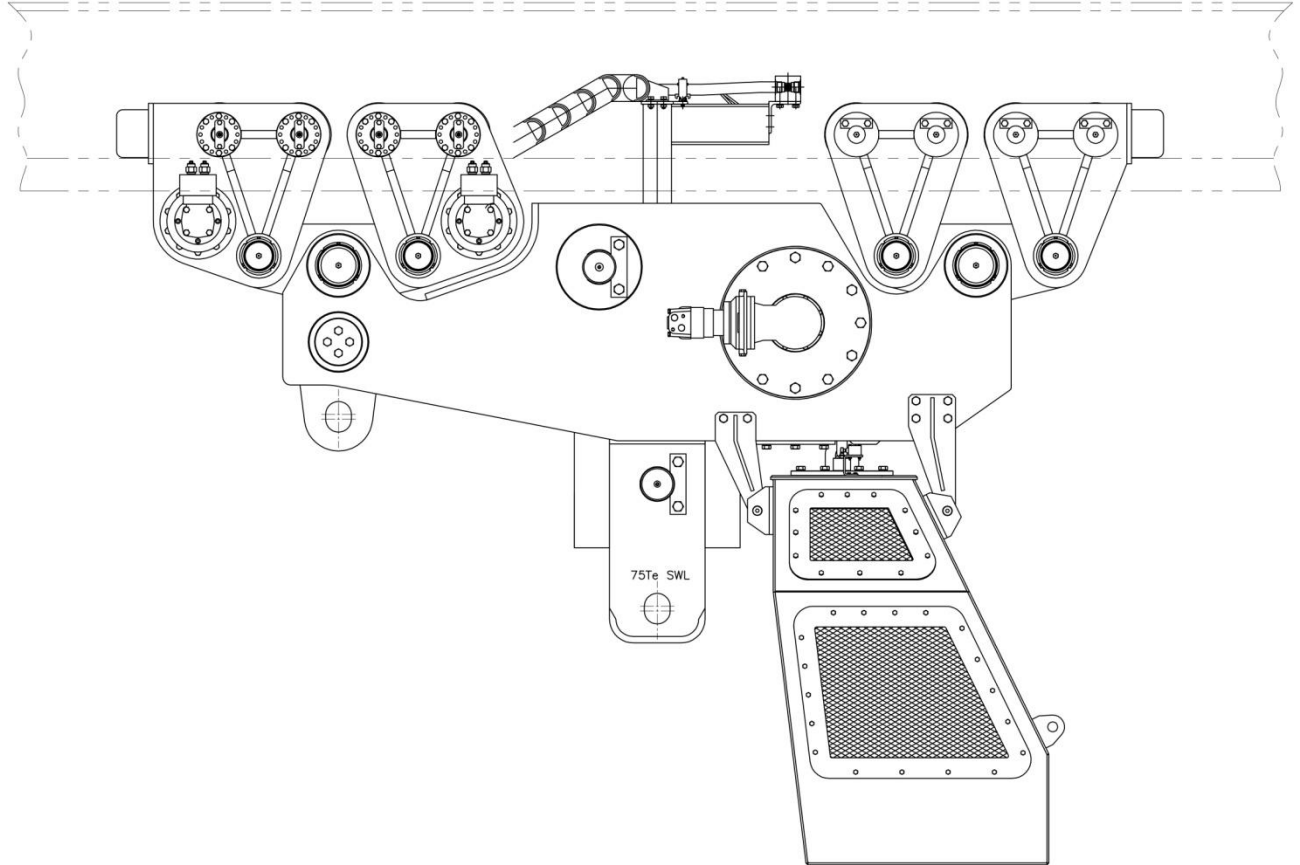


# BOP CHAIN HOISTS



**BOP CHAIN HOISTS ARE OFTEN EMPLOYED ON JACK-UPS TO MOVE AND MAINTAIN THE BOP STACK BENEATH THE CANTILEVER.**

Working as a pair, each chain hoist connects to the BOP Lift ring providing tandem lifts of up to 200 Tonnes.

Each Hoist is mounted on runway beams suspended beneath the drill floor structure. Travel along each runway beam is via rack and pinion mechanisms on each hoist / beam.

The hoist lifting chains are dispensed from a chain bucket by the hoist drive and reeved via idler sprockets over the lifting block assemblies. Each hoist can be operated independently, and used for BOP Stack Maintenance tasks.

# WIRE ROPE BOP HOISTS

## WIRE ROPE HOISTS ARE SOMETIMES USED ON JACK-UPS FOR HANDLING THE BOP STACK.

These systems are mounted on parallel runway beams which span the cantilever. Trolleys traverse each runway beam via rack and pinion, carrying lifting blocks and reeving arrangements above to suit. The winches are mounted at fixed points on the end of each runway beam and reeved around sheaves at the opposite end of each runway beam. Spool-gearred diverter sheave arrangements may be employed where headroom is limited to ensure rope fleet angles are within limits and rope life is preserved. The parallel wire rope hoisting arrangements provide tandem lifts of up to 100 Tonnes, using the BOP's lifting arrangement / lift ring.

BOP CHAIN HOISTS	TECHNICAL SPECIFICATION
Zone Rating	Zone 1
Safe Working Load	Up to 100 Te per hoist
Hoist Speed	Up to 1.1m/min
Travel Speed	Up to 6m/min
Chain Safety Factor	5:1
Type of Control	Deck mounted or hanging pendant
Documentation Included	User Manual, Manufacturing Databook
Certification	As per client's requirements

NB: Technical data may be subject to change

WIRE ROPE BOP HOISTS	TECHNICAL SPECIFICATION
Zone Rating	Zone 1
Capacity	2 x 45 Tonnes [Higher capacities available with additional falls of rope and slower hoisting speeds]
Number of Ropes	2 ropes per winch
Number of Falls	4 falls per rope [Higher capacities available with additional falls of rope and slower hoisting speeds]
Rope Safety Factor	5:1
Winch & Travel	Hydraulic drives
Travel Speed	0 to 5 m/min
Hoist Speed	0 to 4.5m/min
Power Source	Hydraulic, Pneumatic, Electric
Travel and Hoist Limits	Yes
Documentation Included	User Manual, Manufacturing Databook
Certification	As per client's requirements

NB: Technical data may be subject to change

